

Start here

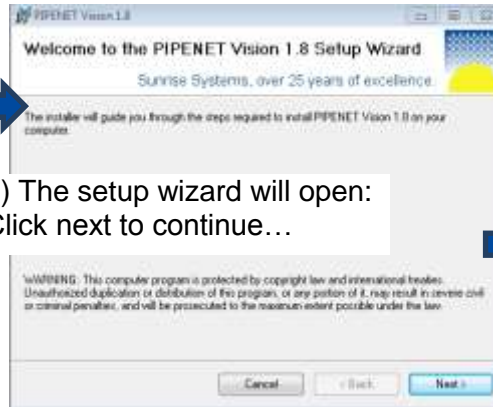
Quick-Start Installation Guide for PIPENET VISION®

1) Insert the PIPENET Vision installation cd and double click on 'Setup'.



N.B. If you have a USB licensing dongle, make sure it is removed BEFORE installing PIPENET.

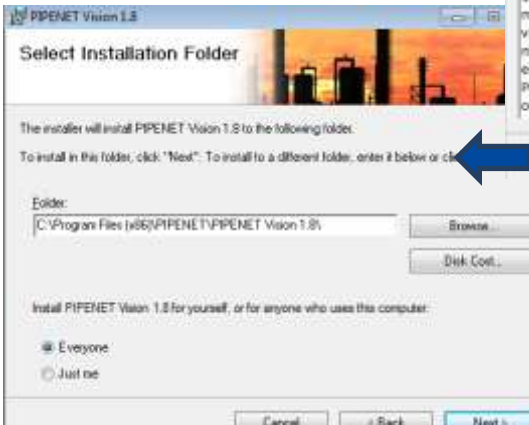
2) The setup wizard will open: Click next to continue...



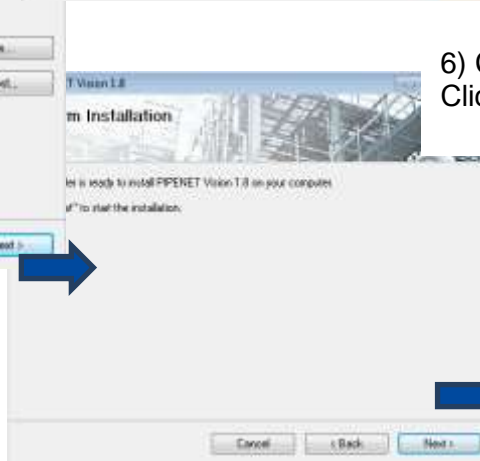
4) Browse the release notes: Click next to continue...



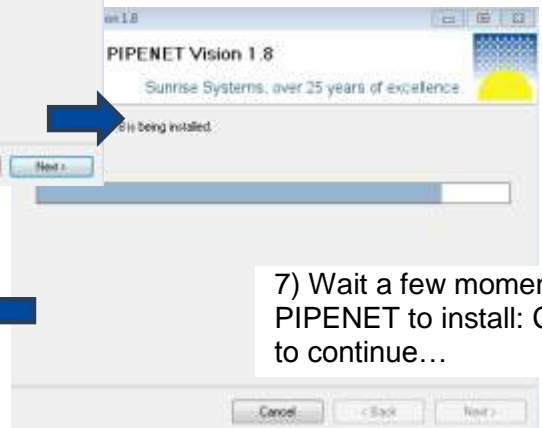
3) Accept the license agreement: Click next to continue...



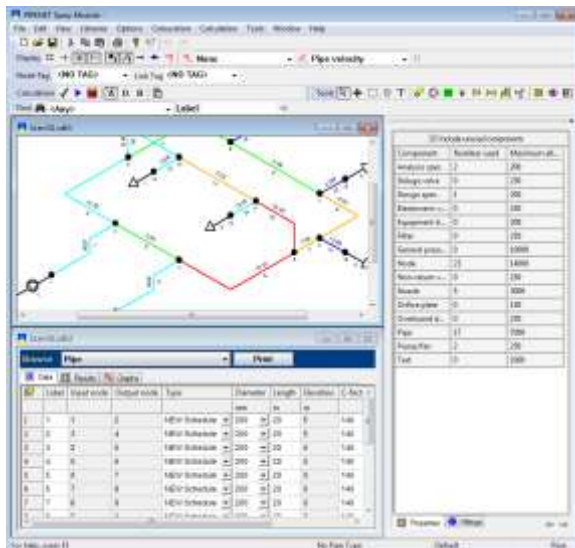
5) Choose where and for whom to install PIPENET: Click next to continue...



6) Confirm the installation: Click next to continue...



7) Wait a few moments for PIPENET to install: Click next to continue...



8) Run PIPENET!